

o/12  
Rhumba

# La vie

Mandolin *Claudio*

F# F#Maj7

Abm7 Db Abm7 Db7

F# *Couplet* F#

F#Maj7 Abm7

Db<sup>7</sup> Db<sup>7</sup> Dbaug

F# F# Db9 *Couplet* 2 F#

F#Maj7 Abm7

Db7 Db<sup>7</sup> Dbaug

F# *Re F* Dbm7 F#7

Dbm<sup>7</sup> F#aug BMaj7


Db7 Abm Db7

Abm<sup>7</sup> Db7


F#

Sub  
1 2 3 4 5 6 7 8 9 10 11 12  
Amplitude  
Clave

Dbm

F#


Dbm7 F#aug BMaj7


Db7 Abm7 Db7

F#

F#


F#

F#Maj7


Abm7

Db7


Db<sup>7</sup> Dbaug F#


Dbm7

F#7

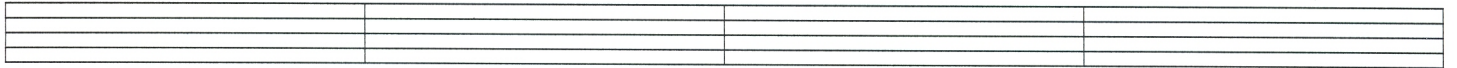
Dbm<sup>7</sup> F#aug


BMaj7

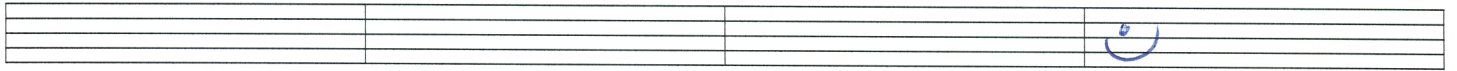
Db7

Abm Db7

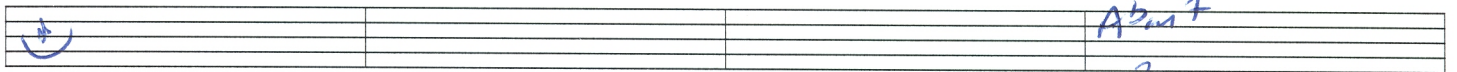

Ab<sup>b</sup>m<sup>7</sup> Db<sup>7</sup> F#



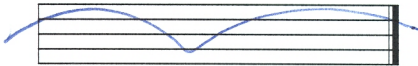
Db<sup>7</sup> Abm Db<sup>7</sup> Abm<sup>7</sup>



Db<sup>7</sup> F# Bm



F# F#



**ÉCOLE DE GUITARE**  
CLAUDE SAINDON

apprendrelaguitare.ca  
(819) 474-6445